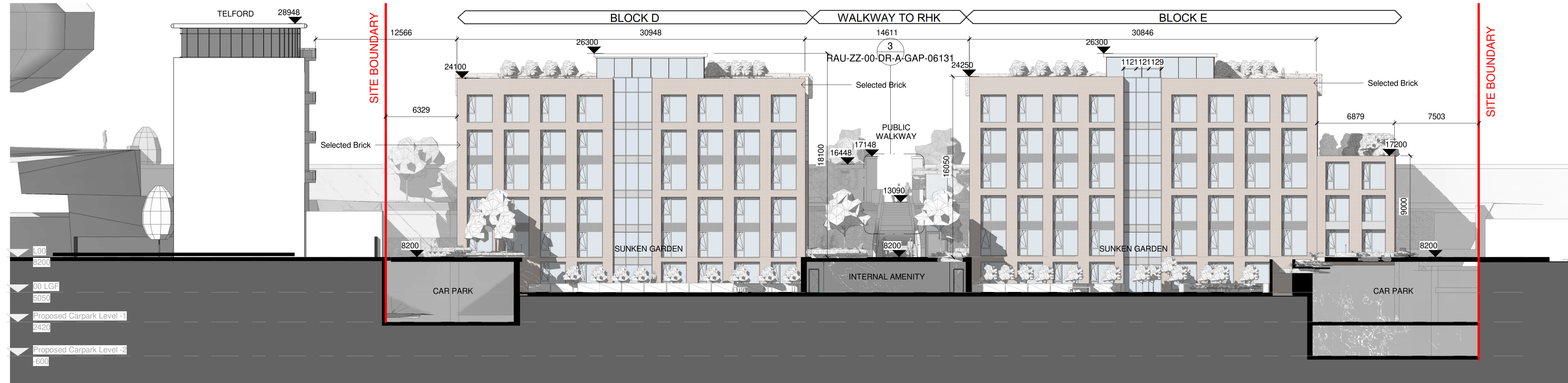


Proposed Elevation CC  
1:200



Proposed Elevation DD  
1:200

**Notes:**  
 - Do not scale from this drawing. Use figured dimensions in all cases.  
 - Verify dimensions on site and report any discrepancies to the Architect immediately.  
 - This drawing is to be read in conjunction with the Architect's Specification.  
 - © This drawing is copyright and may only be reproduced with the Architect's permission.

**Drawing Notes:**

KEY PLAN

Rev.	Date	Drawn	Details of Issue / Revision
P01	02/07/21	EOB	Issued for Planning



Client Details:  
**HPREF HSQ Investments Limited**

Project Details:  
**HSQ Feasibility**  
**Heuston South Quarter, St John's Rd W, Kilmainham, Dublin 8**

Drawing Title:  
**Proposed Elevations 02**

Job No. <b>P19-213D</b>	Sheet Size <b>A1</b>	Scale @A1: <b>1:200</b>
Issue Date: <b>17/09/21</b>	Drawn By: <b>IOB</b>	Reviewed By: <b>EOB</b>

Status	Purpose of Issue
	<b>Planning Permission</b>
Project-Originator-Zone-Level-Type-Role-Classification-Number	
<b>RAU-ZZ-ZZ-DR-A-ELE-06202</b>	<b>P 01</b>